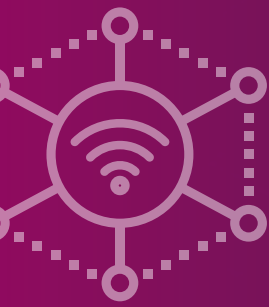


# The ROI of Intelligent Edge

What’s the value in investing in edge technologies?  
Find out.



According to Forrester, edge computing has been **historically tied to the Internet of Things (IoT).**

But...

in 2020, innovations in networking, cloud-native and edge computing technologies **have come together to create breakthroughs in cloud-to-edge integration.**



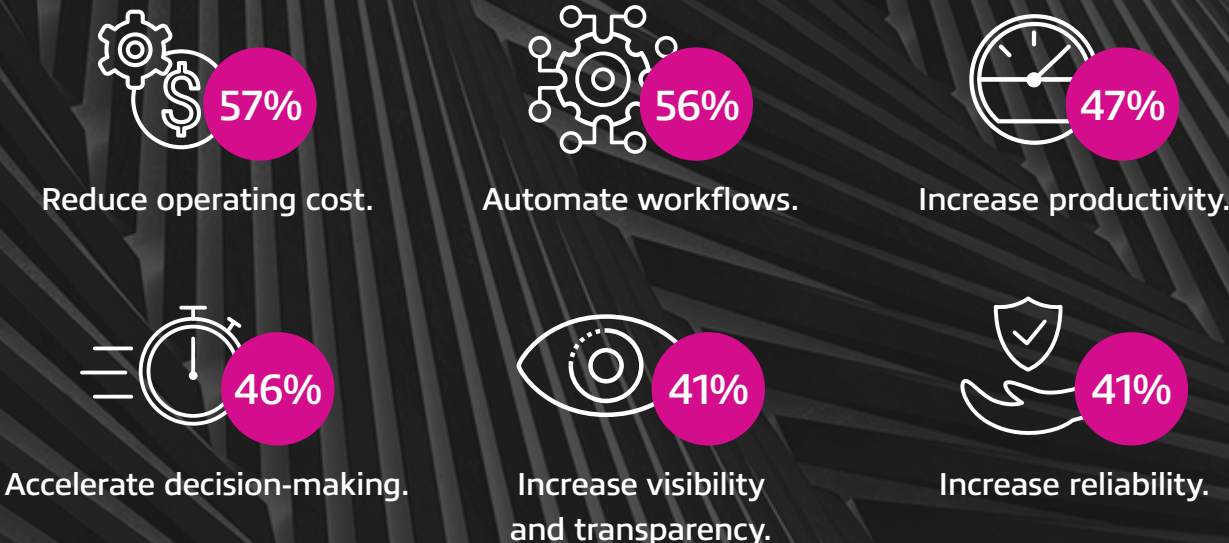
## Where is the edge?



## Why edge?

From office automation to simpler application management to smart home systems, the edge has many use cases today — and projected benefits.

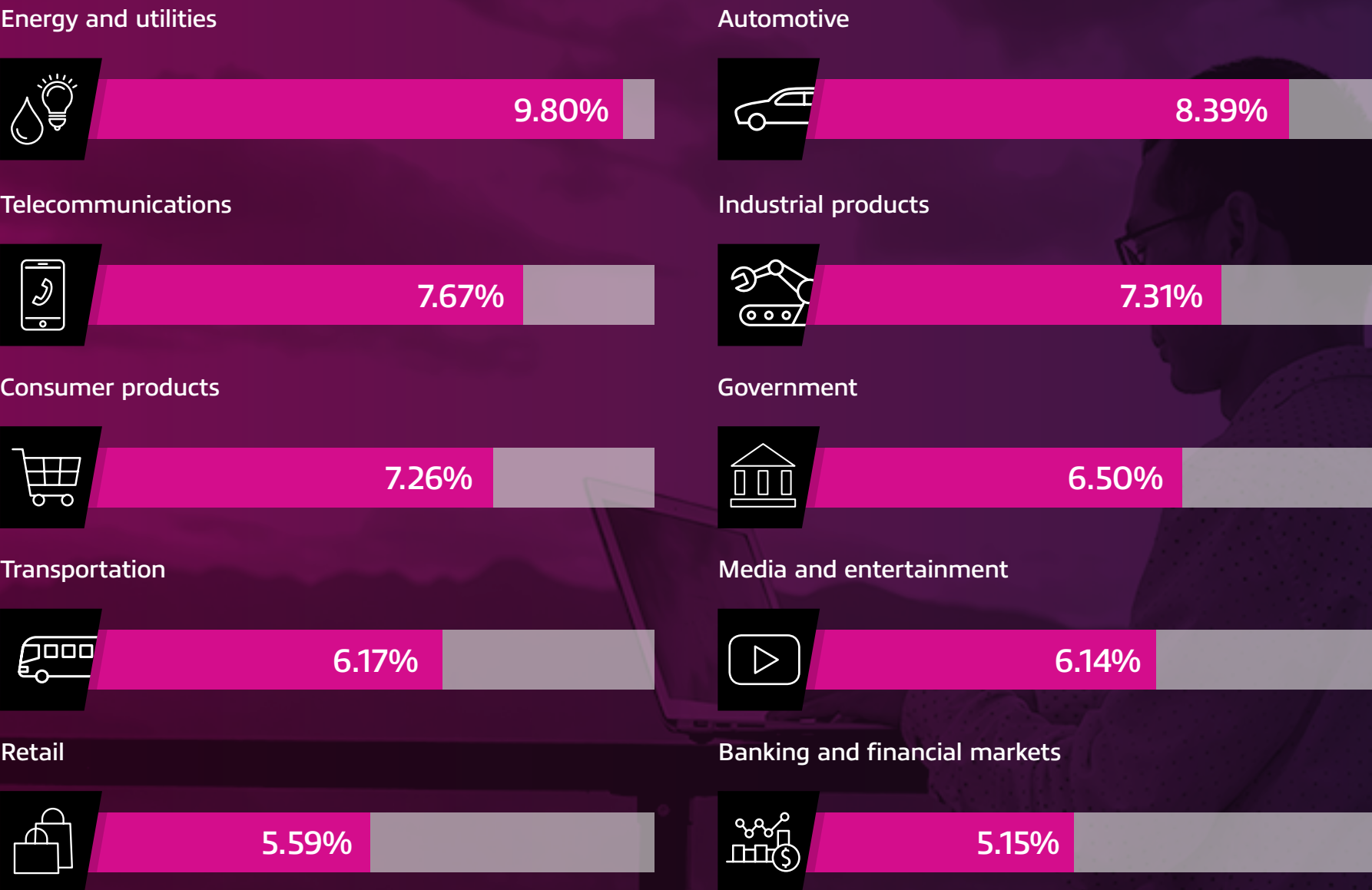
Executives report the greatest impact from edge computing responsiveness expected in 5 years



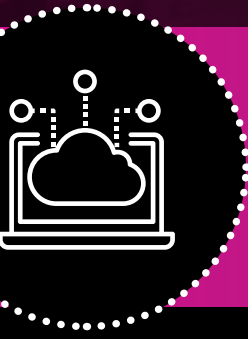
Over the next 3–5 years, firms will **shift their cloud strategy to include edge offerings from more vendors**, according to Forrester.



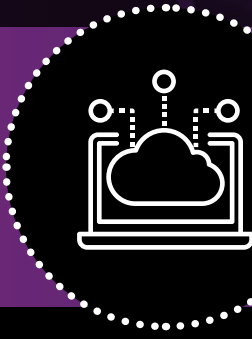
## Average ROI expected by industry from investment in edge in 3 years



Overall average: 5.7%



[Click here to learn more about the intelligent edge and how it’s driving business impact.](#)



Discover your edge. Insight can help your business identify, build and optimize edge computing to drive business value.